

# BLUE MAMBA — OCEANLINE



**Builder:** [Oceanline](#)

**Year Built:** 2008

**Model:** Motor Yacht

**Price:** 6 250 000 € EUR

**Location:** Croatia

**LOA:** 127' 0" (38.71m)

**Beam:** 24' 8" (7.52m)

**Max Draft:** 8' 1" (2.46m)

**Cruise Speed:** 14 Kts. (16 MPH)

**Max Speed:** 28 Kts. (32 MPH)

---

# TABLE OF CONTENTS

---

TABLE OF CONTENTS	2
SPECIFICATIONS	4
Overview	4
Basic Information	4
Dimensions	4
Speed, Capacities and Weight	4
Accommodations	4
Hull and Deck Information	5
Engine Information	5
DETAILED INFORMATION	6
Dimensions	6
Mechanical	6
Navigation Systems	7
Communication Systems	7
Galley Equipment	8
Interior	8
Crew Accommodations	9
Tender and Toys	9
Deck Equipment	9
Safety and Security	10
Broker Comments	10
Exclusions	10
Disclaimer	10
PHOTOS	11
TV Theater	11
Aft Deck	11
Galley	11

---

---

Dining	11
Master Stateroom	11
Master Bath	11
Guest Double Stateroom	12
VIP Stateroom	12
Guest Bath	12
Guest Twin Stateroom	12
Flybridge Helm	13
Pilothouse	13
Jacuzzi	13
Flybridge	13
GA	13
Engine Room	13
CONTACTS	14
Contact details	14
Telephones	14
Office hours	14
Address	14

---

---

# SPECIFICATIONS

---

## Overview

---

### Basic Information

---

**Category:** Motor Yacht

**Sub Category:** Raised Pilothouse

**Model Year:** 2008

**Year Built:** 2008

**Country:** Croatia

**Coast Guard #:** Valleta - Malta

**Vessel Top:** Raised Pilothouse

### Dimensions

---

**LOA:** 127' 0" (38.71m)

**LWL:** 106' 11" (32.59m)

**Beam:** 24' 8" (7.52m)

**Max Draft:** 8' 1" (2.46m)

### Speed, Capacities and Weight

---

**Cruise Speed:** 14 Kts. (16 MPH)

**Cruise Speed RPM:** 1200 Kts.

**Cruise Speed Range:** 845

**Max Speed:** 28 Kts. (32 MPH)

**Max Speed RPM:** 2100 Kts.

**Max Speed Range:** 675 Kts.

**Gross Tonnage:** 165 Pounds

**Water Capacity:** 1188.774234 Gallons

**Holding Tank:** 343.4236676 Gallons

**Fuel Capacity:** 6657.1357104 Gallons

### Accommodations

---

**Total Cabins:** 6

**Sleeps:** 12

---

**Crew Cabin:** 3

**Crew Sleeps:** 6

## Hull and Deck Information

---

**Hull Material:** Composite

**Hull Designer:** Mulder Design

**Interior Designer:** Art-Line (Holland)

## Engine Information

---

**Engines:** 2

**Manufacturer:** MTU

**Model:** 12V4000 M90

**Engine Type:** Inboard

**Fuel Type:** Diesel

---

---

# DETAILED INFORMATION

---

## Dimensions

---

Length overall: 38.71 m / 127'

Waterline length: 32.60m / 106' 11"

Overall Beam: 7.54 m / 24' 8"

Draft extreme: 2.45 m / 8' 1"

Gross tonnage: 165

Net tonnage: 45

Displacement: 180 tons

Fuel capacity: 25,200 litres

Fresh water capacity: 4,500 litres

Grey water: 1300 litres

Black water: 1300 litres

Speed (max): 28 knots at 2100rpm

Speed (cruise): 14 knots at 1200rpm

Range: 675 Nm at max speed / 845 Nm at cruise speed

Fuel consumption: Max speed, 1000l/hr / Cruise speed, 380l/hr

## Mechanical

---

Main engines: 2 x MTU 12V 4000 M90, 2100 rpm/2040 kW

Hours: 1650 (Nov 2014)

Gearbox: ZF 7550 V

Propellers: 2 x 5 blade

Stabilizers: ABT Trac 370

---

Bow thruster: ABT Trac

Stern thruster: ABT Trac

Generators: 2 x Westerbeke 80kw OBEDA

Steering: Jastram S2-13-2-35

Shore power: ATLAS

Water maker: 2 x Sea Recovery Aquamatic 1400

Fuel separator: Alfa Laval

Air conditioning: 5 x Technicold CW60SC (60k BTU)

Sewage: Headhunter Tidal Wave HMX 512

## **Navigation Systems**

---

Radar: Simrad 700

Autopilot: Simrad AP50

AIS: JRC JHS-182

Depth sounder: B&G

Anemometer: B&G H3000

GPS: JRC JLR-7700 Mk II

Electronic Chart: Simrad ECS CS65

Navtex: JRC NCR 333

## **Communication Systems**

---

Inmarsat C GMDSS terminal TT-3020 C

Sailor CU5100 MF/HF Radio

Simrad RS87 VHF with DSC

JRC NCM 1770 VHF

---

ICOM Handheld VHF Radio (5 pcs)

KVH Tracvision M9

KVH Tracvision V7

---

## Galley Equipment

---

4 x combined refrigerators/freezers

1 x deep freezer

1 x Schott Ceran stove

1 x Whirlpool grill

1 x Whirlpool dishwasher

1 x Whirlpool K20 Icemaker/with reverse osmosis system

1 x Miele Nespresso coffee machine

1 x Whirlpool microwave (2010)

1 x Whirlpool oven

Fagor extraction system

---

## Interior

---

The Art-Line (Holland) interior is contemporary, using a mixture of materials such as leather, teak, marble, and alcantara. Colours are neutral, creating a warm and relaxing environment. Large windows throughout ensure good natural light with adjustable lighting to vary the mood after dark. On entering from the aft deck, there is a lounge area of comfortable, low, brown leather seating perfect for watching a movie on the 52" Sharp Aquos TV and enjoying perfect sound through the B&W speakers. In the middle of the saloon is a central dining table for up to 12 guests. This is surrounded by Carrara marble floor. The table can be raised and a leaf removed, to form a bar. The chairs around the table are also height adjustable to transform them from dining chairs to bar stools. A raised platform to starboard with 2 leather armchairs and poof is perfect for a game of chess. Port side forward is the well equipped galley. A spiral staircase takes one either up to the bridge or sundeck or down to the 4 guest cabins. The Master Cabin is on the main deck, forward. It is very bright with large windows and has a 37 inch flat screen Sharp TV, electric blinds, and generous closet/storage space. It has an impressive sunken bathroom down a short flight of steps, with bath tub, twin basins, shower and WC. The VIP cabin

---



is located forward on the lower deck and is accessed via a staircase just aft of the master cabin entrance. It has a 32 inch Sharp TV and has an ensuite shower room, wardrobe, and internet connection. On the lower deck are 4 guest cabins: two double and two twin. All cabins are ensuite with showers. They also have wardrobes, 26" Samsung TV/Audio and internet connection.

---

## Crew Accommodations

---

On the starboard side amidships of the lower deck are 2 x twin cabins for stewardesses, deckhand and engineer. Both are ensuite with showers. To port is the Captain's cabin with a double bed and ensuite bathroom. The crew mess is between these two sets of cabins and comprises round table and chairs large enough for all crew to be seated all together. Small crew galley includes microwave, dishwasher and combined refrigerator/freezer. The laundry with 1 Miele Washing machine and 1 Miele dryer is at the aft wall of the crew mess.

---

## Tender and Toys

---

Castoldi 5m RIB with Yanmar 125hp inboard with jet drive

3 person inflatable banana

Inflatable ring

Water skis

Wakeboard

Diving equipment

Fishing tackle

---

## Deck Equipment

---

Swim platform: 2 mooring bollards Port side swimming ladder Starboard side passerelle The Main deck aft has U shaped fixed seating and a large table for dining and occasional chairs enabling 12 people to sit around it. Muir hydraulic capstans, bollards, side bollards Foredeck: 2 anchor winches with vertical capstans and devils claw for breaking the chain. The boat is equipped with two 170 Kg HHP anchors and each has 130m chain. At the aft part of the sundeck is the tender, Opacmare davit and Jacuzzi. Extensive seating with table for 12 people with chairs and outside steering position. At the starboard side of the sundeck is situated a grill, small refrigerator and sink.

---

## Safety and Security

---

The vessel has Tyco fire detection (smoke and high temperature) sensors in each enclosed area. In the engine room are fire alarms and gas system with Novec 1230 liquid from Tyco. The hull, superstructure and ceilings are insulated with fire insulation (A60). 15 portable fire extinguishers. The boat has seven cameras for monitoring the entrances, and intruder alarm system. The following equipment is also onboard: immersion suits, swimming vest, 4 life rings, 4 life rafts each for 10 people, 2 embarkation ladders.

---

## Broker Comments

---

Designed by Frank Mulder and with an interior by Art-Line, BLUE MAMBA is a very stylish yacht inside and out. Both contemporary and innovative, the interior has accommodation for 12 guests in 6 cabins. She looks fast and she is fast, able to reach a maximum speed of 28 knots. Bow and stern thrusters ensure that she is easily maneuverable.

---

## Exclusions

---

Owner's personal belongings. Owner's personal toys, including but not limited Jet-skis, Tenders, Sea Bobs, Fishing & Diving equipment.

---

## Disclaimer

---

The Company offers the details of this vessel or yacht in good faith but cannot guarantee or warrant the accuracy of this information nor warrant the condition of the vessel. A buyer should instruct his representatives, agents, or his surveyors, to investigate such details as the buyer desires validated. This vessel or yacht is offered subject to prior sale, price change, or withdrawal without notice.

---

# PHOTOS

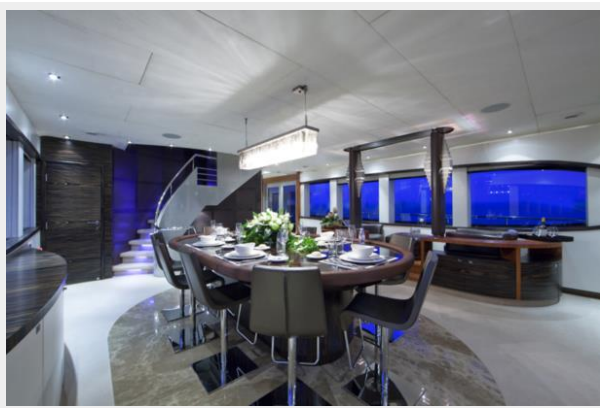
**Aft Deck**



**TV Theater**



**Dining**



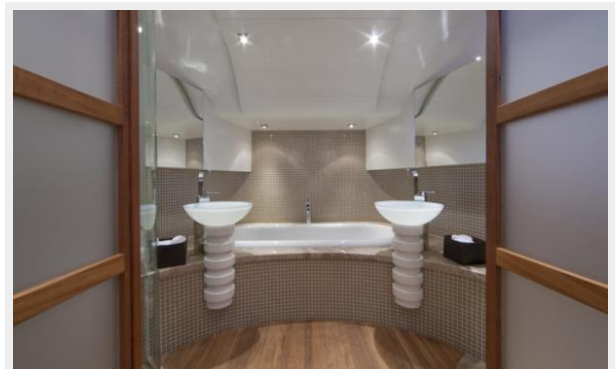
**Galley**



**Master Stateroom**



**Master Bath**



**VIP Stateroom**



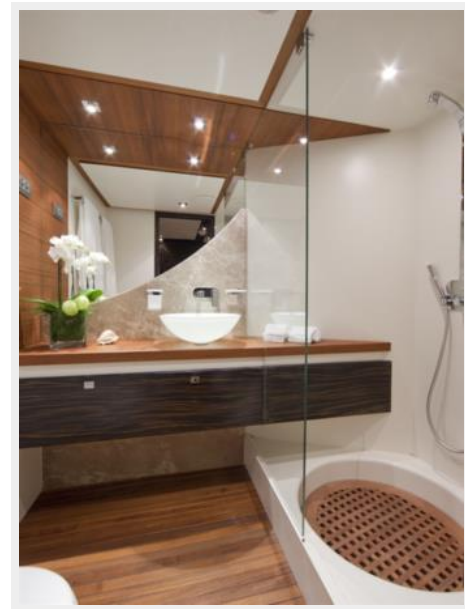
**Guest Double Stateroom**



**Guest Twin Stateroom**



**Guest Bath**



**Pilothouse**



**Flybridge Helm**



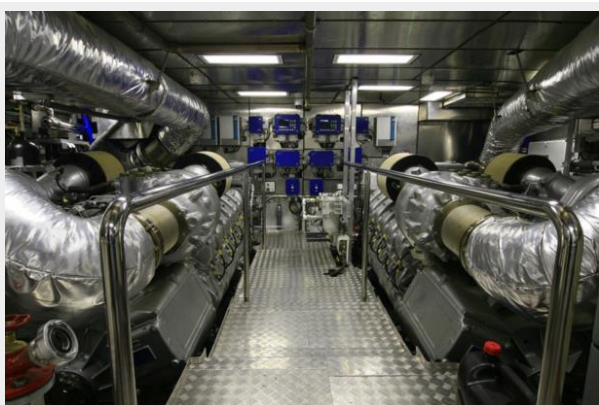
**Flybridge**



**Jacuzzi**



**Engine Room**



**GA**

